



# SWIRL CLINICAL CENTRIFUGE

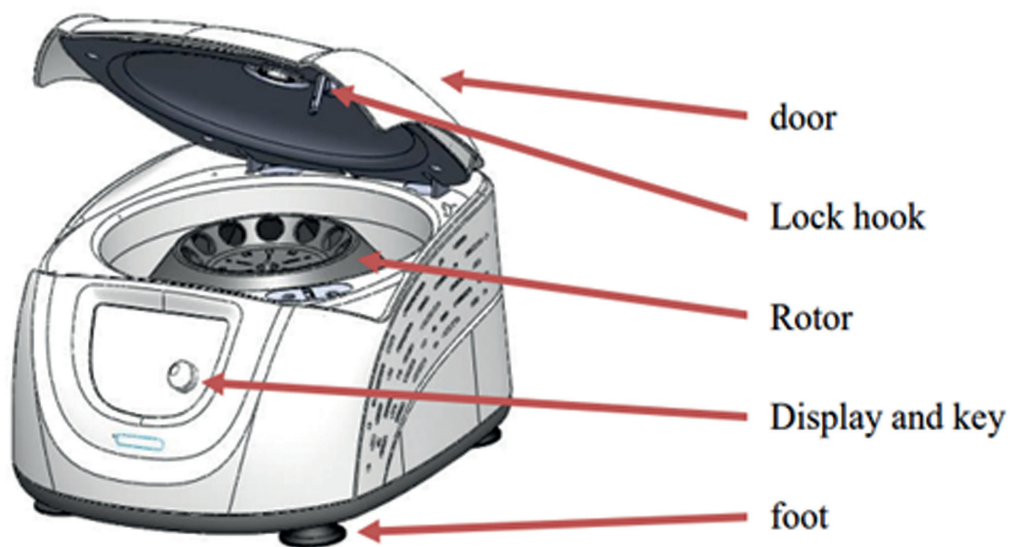
Creating for Life Science

[www.abdoslifesciences.com](http://www.abdoslifesciences.com)

## APPLICATION:

Clinical centrifuge used for separation of serum, plasma, urea, urine, blood samples etc. Also used for clarification of water and soil samples.

## STRUCTURE:

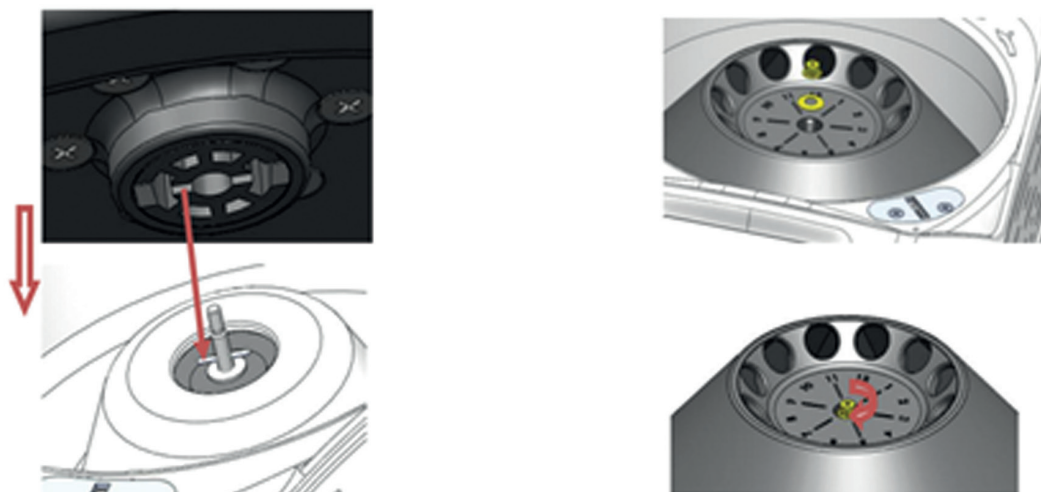


## PERFORMANCE SPECIFICATION:

Specification	E11540
Voltage	Single-phase, AC 220-240V
Frequency	50-60 Hz
Current	3A
Max Speed	300-4500 rpm with increment of 100 rpm
Max RCF	2490xg with increment of 10xg
Speed Accuracy	± 20 rpm
Rotor Capacity	(i) 5ml /7ml /10ml x 12 places. (ii) 15ml X 8 places
Run Time	30sec-99min- HOLD (Continuous operation)
Driving Motor	Brushless DC Motor
Safety Devices	Dual door interlock (ii) Over- speed detection (iii) Over temperature detection (iv) Automatic internal diagnosis
Noise Level	≤ 56 dB
Additional Features	(i) Speed/RCF Switch (ii) Short time run function (iii) Short-alert Function
Acceleration/ Breaking Time	20 sec for both Acceleration & Breaking
Dimensions	304 x 354 x 215 mm
Weight	6 kg
Permissible Ambient Temp	+4 to +40°C
Permissible Relative Humidity	80%



## ROTOR INSTALLATION:



## FEATURES:

- Swirl clinical Centrifuge has a large ergonomic design with easy to read display and sound alert.
- Automatic Lid opening when run is complete, prevents sample warming and allows easy access of samples.
- Both RPM and G-Force are displayed.
- Digital LCD display shows real time parameters and has symbol showing experimental process.
- The pulse key in the Swirl Clinical Centrifuge allows quick spins by pressing and holding intermittently.
- It has precise control, high accuracy of speed and has gentle braking at low speeds with efficient separation.
- Swirl Clinical Centrifuge conforms to international safety standards and regulations. It has also passed the explosion proof test from TUV and FCC.
- Bio-safe rotor and anti-sample overflow prevents sample leakage during centrifugal process and microbial contamination.
- Swirl Clinical Centrifuge Adopts a Brushless DC Motor.
- Qualifies EN61010-2-101:2022 for Invitro Diagnostic (IVD) medical equipment category.
- Goes into a self-diagnostic check when switched on and then displays accumulative time & last running parameter.

## **SPARE ACCESSORIES:**

E11541 – 8 Place Rotor for 15ml & 12 Place Rotor for 5, 7 & 10ml.

E11542 – Rotor Adapter for 10ml used with E11541

## **QUALITY & COMPLIANCE:**



For additional product or technical information,  
please visit: [www.abdoslifesciences.com](http://www.abdoslifesciences.com)

For distributor information contact: [labtech@abdosindia.com](mailto:labtech@abdosindia.com)



+91-11-41081897



[www.abdoslifesciences.com](http://www.abdoslifesciences.com)



[labtech@abdosindia.com](mailto:labtech@abdosindia.com)